

## SINGLE WALL FUEL TANK

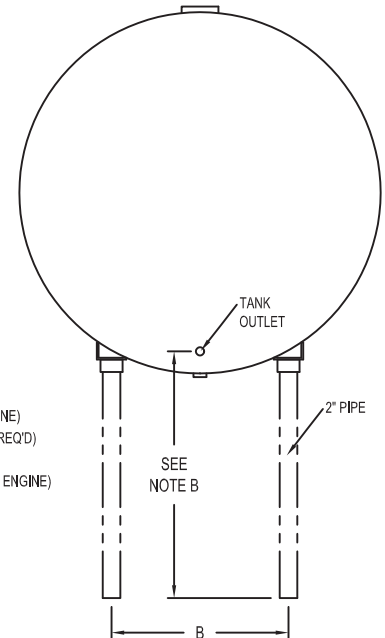
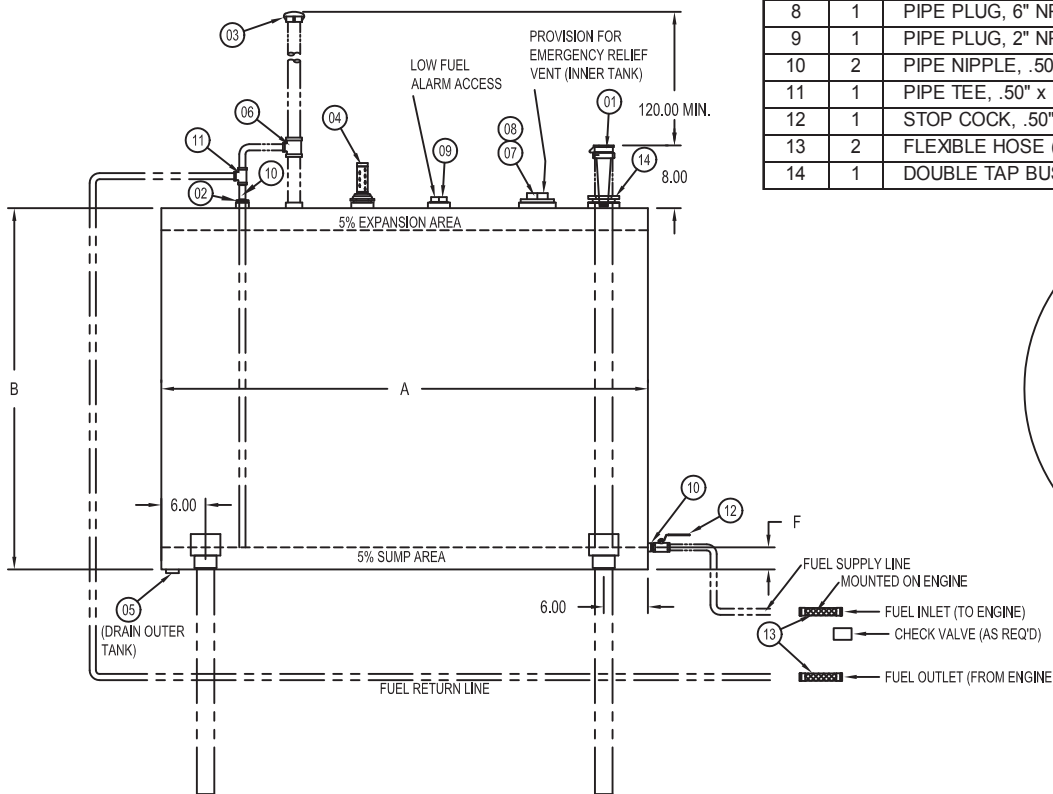
<b>CAPACITY</b>	300, GAL			
<b>TYPE</b>	SINGE WALL, ABOVEGROUND, HORIZONTAL			
<b>MATERIAL</b>	MILD CARBON STEEL			
<b>TEST</b>	5 PSI			
<b>MIN GAUGE ATM</b>	HEADS:	10 GA		
	SHELL:	10 GA		
<b>PAINT</b>	INTERIOR:	NONE	EXTERIOR:	PRIMED
<b>CONSTRUCTION</b>	FLAT FLANGED HEADS LAP, WELD ALL EXTERIOR SEAMS ONLY			
<b>APPROVAL</b>	UL 142			

**NOTES**

- (A) ITEMS DISPLAYED IN PHANTOM LINES FURNISHED BY OTHERS TO CONFORM TO INDIVIDUAL JOB REQUIREMENTS
- (B) INSTALL TANK IN ACCORDANCE WITH REQUIREMENTS OF LOCAL AUTHORITIES. ARRANGE TANK AS CLOSE TO ENGINE AS POSSIBLE AND LOCATE TANK OUTLET ABOVE FUEL PUMP CENTERLINE
- (C) PITCH TANK TOWARD DRAIN .25" PER FOOT
- (D) FOR PROPER FUEL SUPPLY AND RETURN SIZE SEE ENGINE MANUFACTURER'S RECOMMENDATION

TANK SIZE (GAL)	A	B	C	F	WT
300	48.00 (1219.2)	42.00 (1066.8)	28.00 (711.2)	3.00 (76.2)	275

ITEM	QTY	DESCRIPTION
1	1	2" FILL CAP - WITH PROVISIONS FOR PADLOCK, COMBINED WITH REMOVABLE STRAINER ( MAX .06 MESH)
2	1	DOUBLE TAB BUSHINGS, 1" X .50"
3	1	VENT CAP, 2.0" NPT
4	1	DIRECT READING TANK GAUGE, 2" NPT
5	1	PIPE PLUG, 1" NPT
6	1	PIPE TEE, 2.0" x 2.0" x 0.50"
7	1	PIPE PLUG, 4" NPT (150 - 700 GAL)
8	1	PIPE PLUG, 6" NPT (900 GAL)
9	1	PIPE PLUG, 2" NPT
10	2	PIPE NIPPLE, .50" x CLOSE
11	1	PIPE TEE, .50" x .50" x .50"
12	1	STOP COCK, .50" NPT - WITH PROVISION FOR PADLOCK
13	2	FLEXIBLE HOSE (SUPPLIED WITH ENGINE)
14	1	DOUBLE TAP BUSHING, 3" x 2"



<b>NOT FOR CONSTRUCTION, INSTALLATION OR APPLICATION PURPOSES UNLESS CERTIFIED</b>		
CERTIFIED FOR: NORM TEKNİK A.Ş.		
CUSTOMER ORDER NO.:	TAG NO.	
SHOP ORDER:	CERTIFIED BY:	DATE: